

BARRIER WASHER EXTRACTORS

D1500 MICROPROCESSOR

AS 100
PULLMAN

FEATURES

- High spin soft mounted washer extractor, no need of anchorage, 2 opposed doors.
- Extraction speed 750 RPM.
- G force 325.
- Horizontally suspended drum by means of 2 axles which increase robustness, Pullman partition.
- Electric or steam heating.
- Microprocessor D1500, 7 preset programs and 23 free other ones.
- Drum with electric brake.
- 2 standard water inlets.
- standard double drain.
- Load capacity 90 kg.
- Body, drum and vat in stainless steel.
- Soap dispenser with 4 compartments.
- 7 signals for dosing pumps + 4 programmable additionna ones.
- Air operated automatic opening doors, compressed air required (50 lt compressor, air working pressure 7 bar).



OPTIONS

- 3rd water inlet for water recovery.
- Lighting column end of cycle.
- Titration valve.
- Dual heating electric - steam.
- Stainless steel frame with rubber.
- Programming to extend up to 11 signals for dosing pumps.



Programmeur
Electronique



Inox



Eau chaude
et Eau froide



Inverter

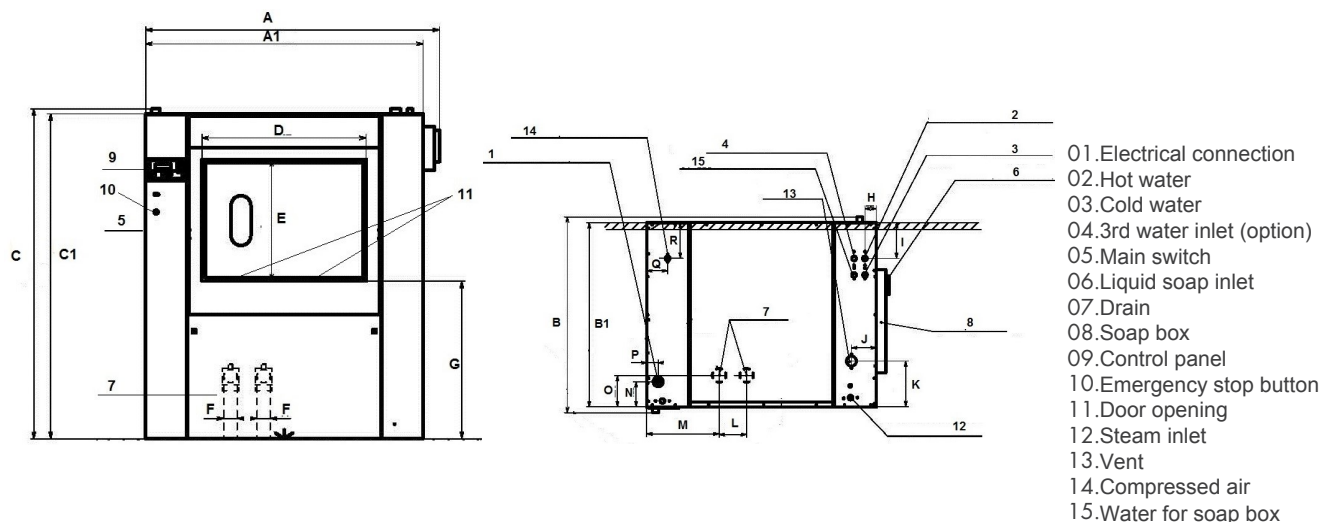


Recyclage 95%



Installation et
maintenance aisées

TECHNICAL DATA	UNIT.	ASEP 100
DRUM		
Capacity 1:9 / 1:10	Kg	100 / 90
Volume	l	900
Diameter	mm	1.050
Depth	mm	1.032
Number of pockets	N°.	2 - Pullman partition
GENERAL DETAILS		
Washing speed / Spining speed	r.p.m.	45 / 750
G Force	-	325
D1500 Microprocessor	-	Standard
Double drain	-	Standard
DOORS		
Drum doors dimensions	mm	500 x 900
Vat doors dimensions	mm	960 x 700
Height base door	mm	960
POWER		
Motor	kW	15
Electric heating	kW	60
Max. power (electric heating)	kW	75
Max. power (hot water model)	kW	15
Max. power (steam model)	kW	15
CONNECTIONS		
Water inlets	inch	1" 1/4
Steam inlet	inch	3/4
Drain	mm/inch	80 / 3" x 2
MACHINE DIMENSIONS / PACKING DIMENSIONS		
Length / Length	mm	1.680 / 1.900
Width / Width	mm	1.344 / 1.500
Height / Height	mm	1.960 / 2.230 (Elec. mod) - 2.260 (steam mod.)
Net weight / Gross weight	kg	1.900 / 1.940
Volume	m ³	6.35



	A	B	C	A1	B1	C1	D	E	F	G	H	I	J	K	L	M	N	O	P	Q	R	S
AS 100	1.777	1.429	1.990	1.677	1.344	1.960	992	734	80	951	82	262	183	333	200	530	183	230	83	152	262	-